

# Yellow Bird

Traditional Caribbean  
Arranged Gay Magnus

Dble. Tenor

Musical notation for the first staff, labeled "Dble. Tenor". It features a treble clef, a common time signature, and a melody starting with a quarter rest, followed by quarter notes, eighth notes, and a triplet of eighth notes. The piece ends with a quarter note and a sharp sign.

5

A

Musical notation for the second staff, starting at measure 5. It begins with a double bar line and a repeat sign, followed by a quarter rest, eighth notes, and quarter notes. A box labeled "A" is placed above the first measure.

9

Musical notation for the third staff, starting at measure 9. It begins with a quarter rest, eighth notes, and quarter notes.

13

Musical notation for the fourth staff, starting at measure 13. It features a continuous eighth-note melody.

17

Musical notation for the fifth staff, starting at measure 17. It features a continuous eighth-note melody with a triplet of eighth notes at the end.

21

1.

2.

B

Musical notation for the sixth staff, starting at measure 21. It includes first and second endings, a double bar line with repeat signs, and a box labeled "B" above the second ending.

25

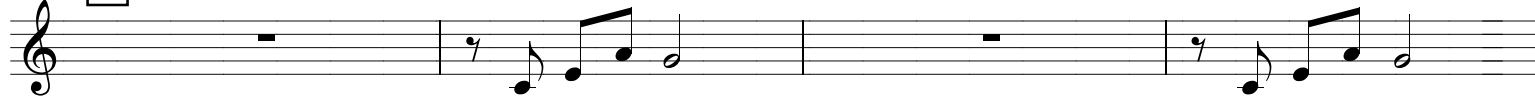
Musical notation for the seventh staff, starting at measure 25. It features a chordal accompaniment with a quarter rest, eighth notes, and quarter notes.

29

Musical notation for the eighth staff, starting at measure 29. It features a melody with a triplet of eighth notes.

33

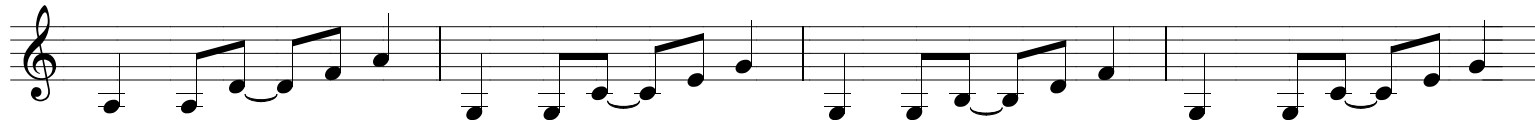
A



37



41



45



49



52

